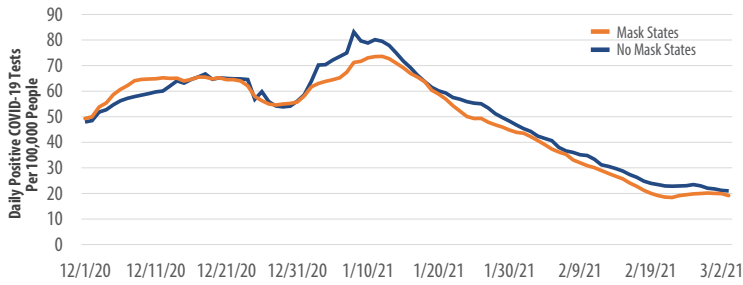


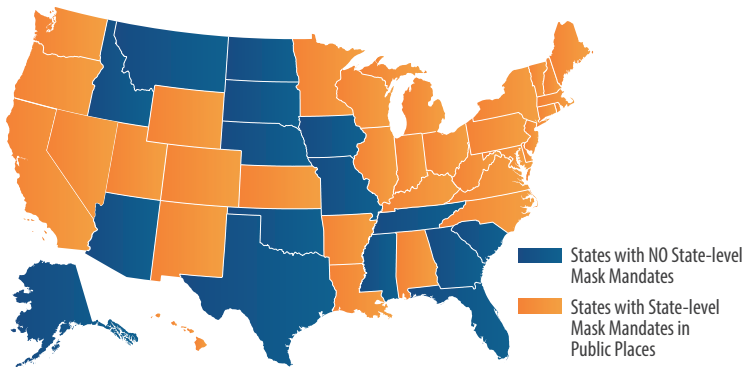
First Trust COVID-19 TRACKER

Bellwether Education Partners, a nonprofit organization focused on improving learning outcomes, estimates that **since March 2020, when American schools shut their doors, 3 million children have dropped out of the formal education system and may never return to school.**¹

Mask States vs. No-Mask States



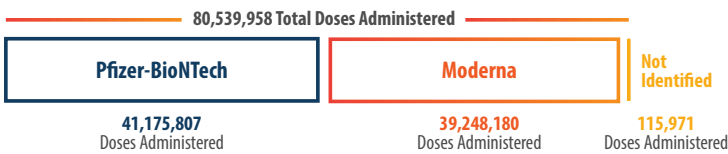
Data from December 1, 2020 through March 2, 2021 (7-Day Moving Average)
Sources: CDC.gov, covidtracking.com, First Trust Advisors



Data as of March 2, 2021
Source: U.S. News & World Report

U.S. COVID-19 Vaccine Doses Administered by Vaccine Type

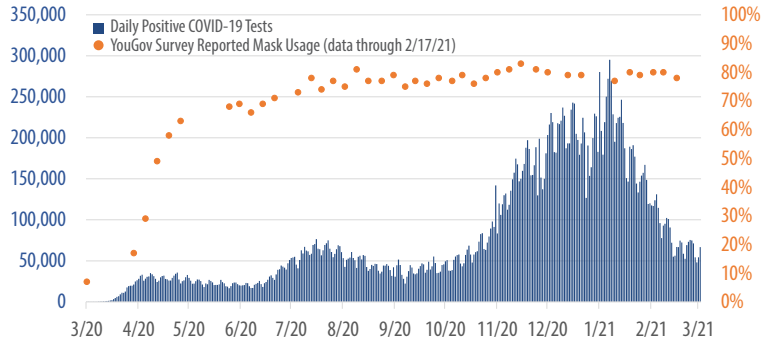
As of March 3, 2021



Source: CDC.gov

Mask Usage vs. Daily Positive Tests

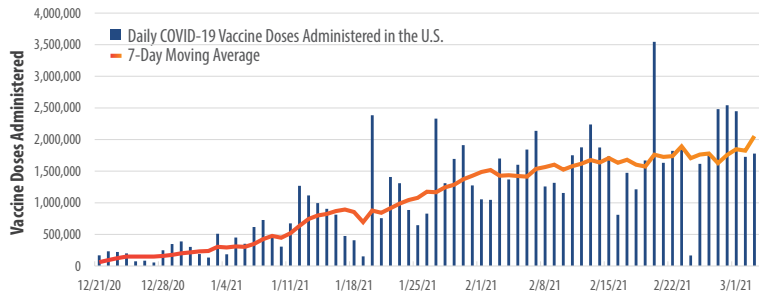
March 20, 2020 - March 3, 2021



Sources: YouGov.com, covidtracking.com

Daily COVID-19 Vaccine Doses Administered in the U.S.

December 21, 2020 - March 3, 2021, 7-Day Moving Average

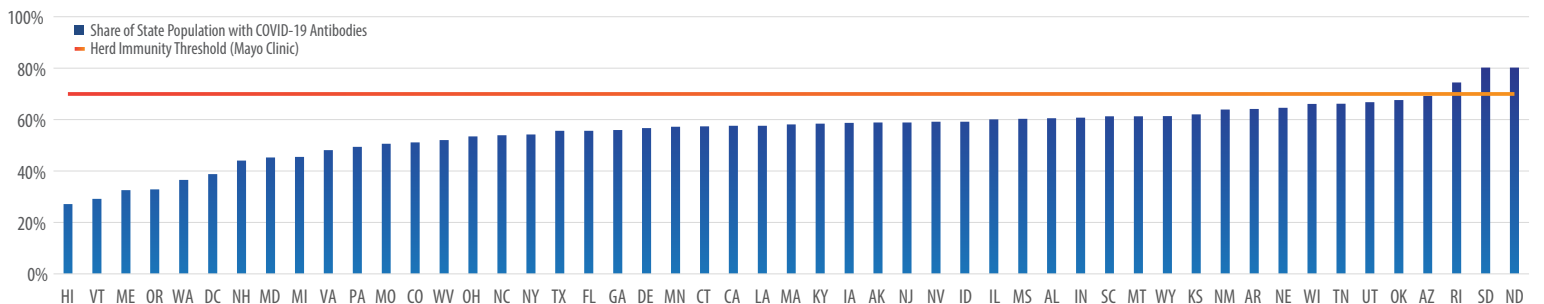


Source: Bloomberg

A national study of 32 billion U.S. medical record and insurance claims found that **in April 2020, claim lines for generalized anxiety disorder in the 13-18 age group increased 93.6 percent as a percentage of all medical claim lines over April 2019, while major depressive disorder claim lines increased 83.9 percent.**²

Estimated Share of Population with Antibodies by State

As of March 3, 2021



Sources: CDC.gov, covidtracking.com, mayoclinic.org, First Trust Advisors

¹bellwethereducation.org (October 21, 2020); ²nypost.com (March 3, 2021)